

# KINGRINDER MANUAL HAND COFFEE GRINDER MANUAL

MODLE: K0/K1/K2



## WHAT'S IN THE BOX

- Grinder



- Handle



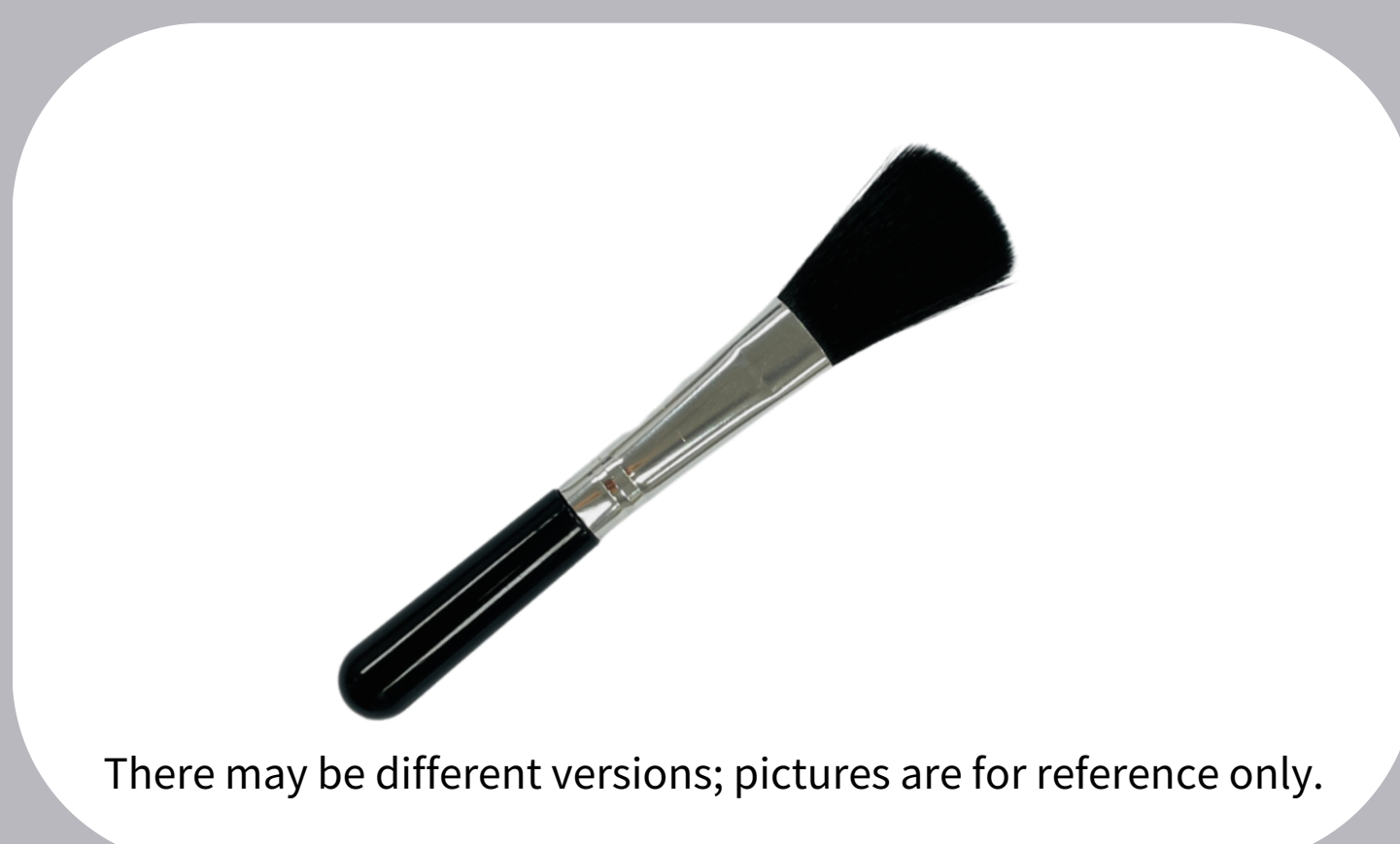
- PC Lid with Black O-ring



- White O-ring



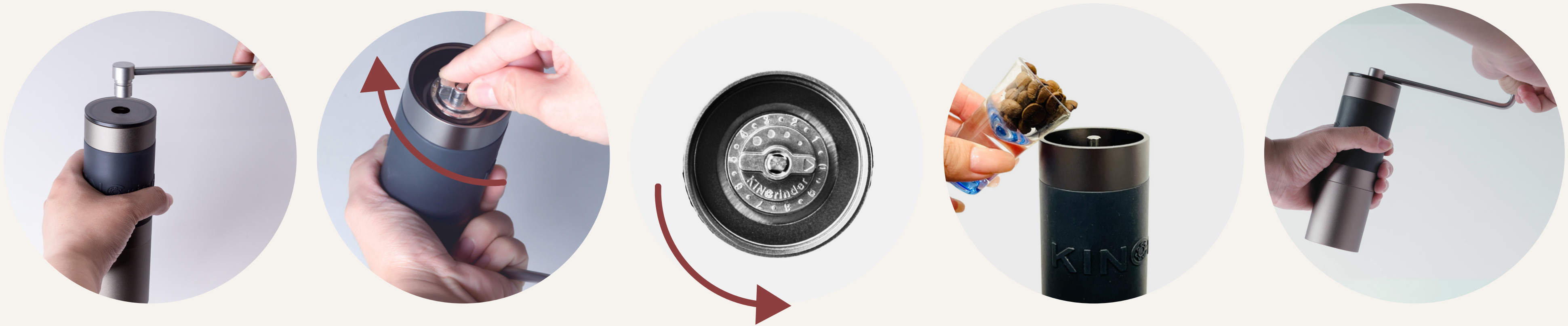
- Brush



There may be different versions; pictures are for reference only.

## HOW TO OPERATE THE GRINDER?

1. Remove the receiver. Position and **continue to hold the grinder** as demonstrated in the image for the subsequent steps.
2. Rotate the spin dial **clockwise until there is resistance**; do not overtighten the part.
3. Rotate the spin dial **counterclockwise** to the recommended grinding clicks (Please refer to the table below).
4. Tighten the receiver and remove the handle. Place 20~25g of coffee beans on the grinder.
5. Reattach the handle and start grinding.



## RECOMMENDED GRINDER SETTINGS

Brewing methods	K0	K1	K2
Turkish coffee	Not recommended	20 clicks	20 clicks
Espresso	Not recommended	40 clicks	40 clicks
Moka pot AeroPress	60 clicks	60 clicks	60 clicks
Pour-Over	100 clicks	100 clicks	100 clicks
French Press	140 clicks	140 clicks	140 clicks

※One round is equivalent to 40 clicks.

※For reference only; adjustments may be made according to personal preference.

## HOW TO CLEAN THE GRINDER?

1. Remove the receiver, attach the handle to the grinder, and **continue to hold the grinder** as demonstrated in the image for the subsequent steps.
2. Rotate the spin dial **counterclockwise** to disassemble the grinder.
3. Take out the components in order: spin dial, numerical dial, inner burr, spring, and bearing cover. **※Note: No need to remove the central shaft.**
4. Use the brush to clean the grinder.
5. Place the components back in order: bearing cover and spring. There are two shapes of the bearing cover: flat design and curved design. Ensure the curved design faces upward.
6. Attach the inner burr and the numerical dial to the rectangle shape of the central shaft to proceed with the grinder assembly.
7. Install the spin dial and rotate clockwise to complete the assembly.



## PRECAUTIONS:

1. The entire grinder **should not be washed with water**. Please use the brush for cleaning.
2. Do not rotate the handle when the grind setting is **at 0 or below 16 clicks**, as this could damage the burr set.
3. For precision reasons, do not dismantle the exterior burr. Avoid forcefully disassembling the grinder with tools.
4. Only grind coffee beans. Do not grind unroasted coffee beans.
5. Avoid spraying water directly onto any part of the grinder. You can perform RDT by spraying water on another object.
6. **Avoid second grinding** as the coffee fine powder may block the parts.
7. Please store in a dry environment.

## HOW TO ASSEMBLE THE PC LID AND HANDLE?

1. **Take out the black O-ring** from the groove on the PC lid.
2. Insert the provided white O ring.
3. Ensure that **the white O-ring is correctly installed into the groove** on the handle for proper fixation.

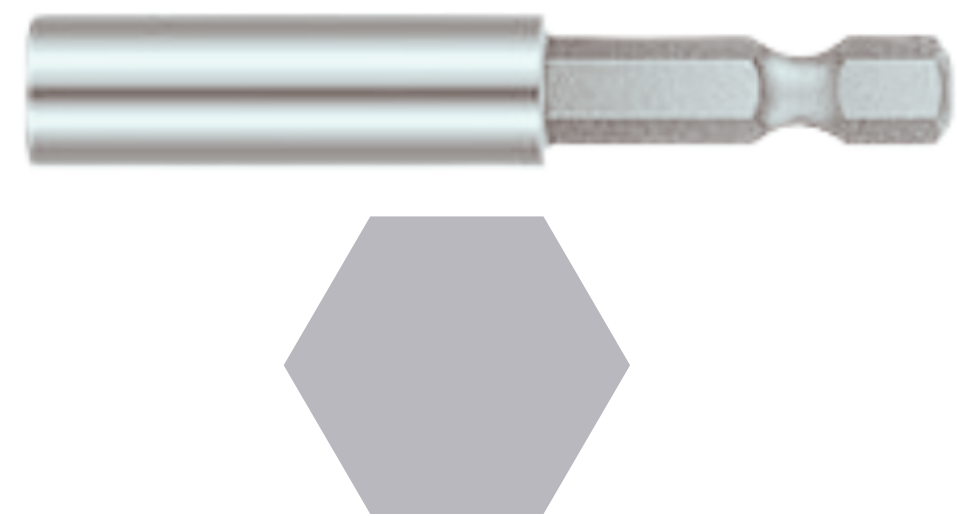


## HOW TO USE IT BY ELECTRIC?

You need to prepare:



Electric screwdriver at a **15~25Nm torque.**



**6.35mm(1/4 inch) Hex Shank.**



Take out the handle and install the black O-ring to the PC lid.



Ensure that the bit holder is fully inserted into the center shaft, grasp the grinder firmly, and gradually apply power.

※**Slow down the grinding speed to prevent damage to the central shaft.**